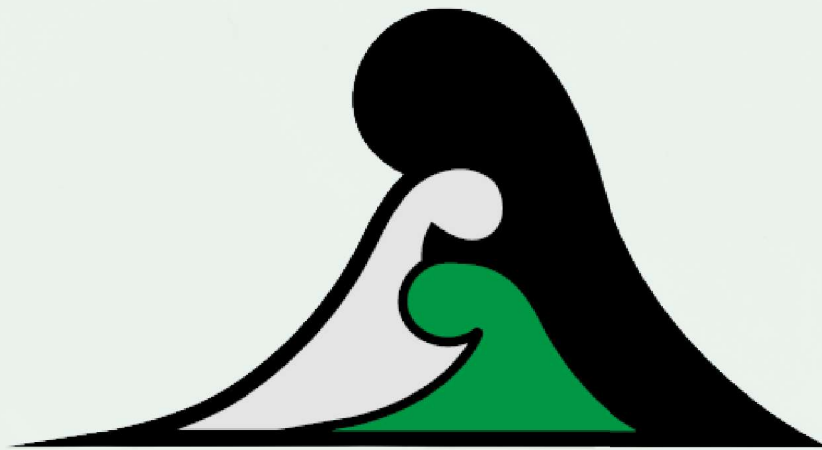


**EAST TĀMAKI SCHOOL**

**Te Kura O Tāmaki Ki  
Rāwhiti**



**INFORMATION FOR  
FAMILIES**

**2025**

*Kia Kotahi Tātou*

*Let us come together as one*

We welcome parents and families to the  
East Tāmaki School community.

East Tāmaki School Vision

***Inspire Learners  
Strengthen Mana  
Influence the Future***

***Whakaohoho ngā ākonga  
Whakamana  
Whakaaweawetia ā mua***

PO Box 58-035  
Botany  
Auckland  
2163

Phone: 09 274-9246  
Mobile: 021 02944884

Email: [office@easttamaki.school.nz](mailto:office@easttamaki.school.nz)

Website: [www.easttamaki.school.nz](http://www.easttamaki.school.nz)



# East Tāmaki School Values

## *Ngā Uara*

### Manaakitanga

Shows respect. Shows kindness. Cares.

### Piripono

Keeps trying. Shows pride in learning.

### Kaitiakitanga

Cares. Protects. Is future focussed.

### Whanaungatanga

Works together. Connects. Belongs.

# East Tāmaki School

## Whakatauki

*Ko te manu e kai ana i te miro,  
nōnā te ngahere.*

*Ko te manu e kai ana i te mātauranga,  
nōnā te ao.*

*The bird that partakes in the miro berry,  
owns the forest.*

*The bird that partakes in education,  
owns the world.*

# East Tāmaki School Key Competencies

## *Hikurangi*

### Self-Manager - Ruru

Is organised, makes good choices, achieves goals

### Collaborator – Pūkeko

Solves problems, finds information,  
works well with others

### Communicator - Tūi

Talks about ideas, talks with others, good listener

### Thinker - Kiwi

Asks questions, thinks about their learning,  
finds new ways of doing things

### Hauora - Kererū

Looks after themselves and their belongings,  
cares about people, is kind





# Daily Routine

**8.00 – 8.15 Arrive at school**

8.30 – 8.45 Learning begins

10.45 – 11.15 Morning Break

11.15 – 11.30 Eating Morning tea

11.30 Learning time

12.45 – 1.15 Lunch Break

1.15 – 1.30 Eating Lunch

1.30 – 2.45 Learning time



## School Times

**Children are expected to be at school by 8.15am every day.**

Children can arrive between 8.00am – 8.15am. The school is not responsible for children who arrive before 8.00am.

## At the End of the Day

All children are to go straight home at 2.45pm except those who are waiting to be picked up by an after school care service such as SKIDs.

East Tāmaki School staff cannot supervise children after this time. Please do not ask us to do this. It is the parents' responsibility to ensure children get home safely.

If you have an emergency which means you will be a little late to pick up your children please phone the office

# East Tāmaki School

## Expectations



### School Expectations of Whānau

#### **Attendance**

It is important that:

- Children are at school by 8.15am.
- Children attend school every day unless they are very, very sick.
- Phone the school if a child is very, very sick and is away from school.

#### **Bags**

Your child is expected to:

- Bring a schoolbag and book bag to school every day.

#### **Uniform**

Your child is expected to:

- Wear the full clean school uniform every day including school shoes.

#### **Food**

Children are given a free healthy lunch and a piece of fruit every day. If parents want to provide additional food that is fine so long as it is healthy food.

#### **Support**

Parents are expected to:

- Listen to your child read the books that they bring home and talk about these.
- Support the school in activities such as home learning and parent learning discussions.

#### **Parking**

- **Please do not park in the Preston Road School Carpark.** The best place to park is at the Fisher Crescent school entrance.

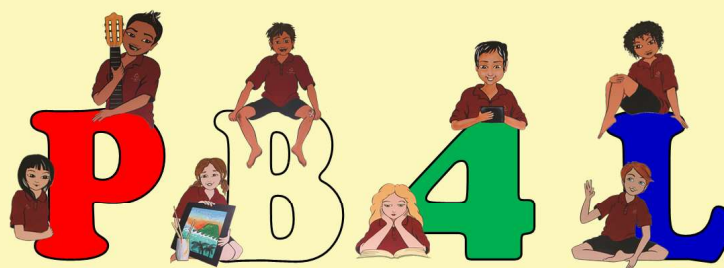
## Attendance

- If a child is away please phone the school on 274-9246.
- All children are expected to come to school every day unless they are very, very sick.
- If a child is away without notification the attendance service or neighbourhood police team may be informed, to find out why the child is away.

## Behaviour

We are a PB4L school – Positive Behaviour for Learning. We call our PB4L ‘Mana Up’.

The East Tāmaki School community will create a safe environment for learning where everyone feels respected, supported and included. Children’s behaviour will be addressed fairly and effectively.



There are many ways that we reward the expected behaviours including certificates, dojo points and Kapai Awards. We award class dojo points for showing excellent behaviour.

If children constantly behave inappropriately parents will be informed to work alongside the school to help the child.

If you have any concerns please contact the office to make an appointment.



## East Tāmaki School Uniform

Children are to wear the correct and clean uniform every day. Please put your child's name on all items of the uniform. Please note that the only earrings a child can wear are studs not hoops or dangly earrings. This is for safety reasons. Children are not to wear make-up or nail polish to school.

### Available at East Tāmaki School

Details and prices as follows:

Polar Fleece	\$35.00
Short Sleeve Polo Shirt	\$35.00
Sun Hat	\$10.00



### To be purchased at any shop

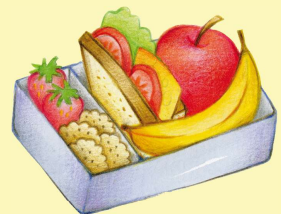
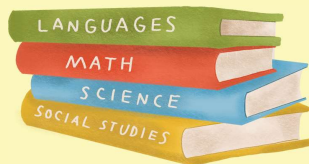
Shorts – black  
Pants – black  
Skirt – black  
Socks – black

Black closed in appropriate school shoes or black sandals. All items purchased at a shop must be **all black** with no other colours on them.

Boots, jandals, crocs and slip on shoes are not acceptable nor safe footwear.

## Books, Pens and Pencils

- Parents need to buy books, pens and pencils on the day your child enrolls.
- Parents should buy these from East Tāmaki School as stationery bought from other places is almost always inappropriate, i.e. wrong lines in writing books. To replace these items ends up costing parents more money than they would have paid if buying from the school.



## Food at School

- East Tāmaki School is a Health Promoting school and Garden to Table school.
- **Children are given a piece of fruit for morning tea and a healthy lunch every day.**
- Parents can provide food themselves and we expect this to be healthy.
- Children can only bring water to drink at school.
- If children bring food or drink which is not healthy such as twisties, lollies or sugary drinks they will not be able to eat them at school.
- Chewing gum and bubble gum are not allowed in the school grounds by anybody.

## **School Newsletter**

Newsletters go out most weeks. Parents need to look out for them as they have many important notices in them.

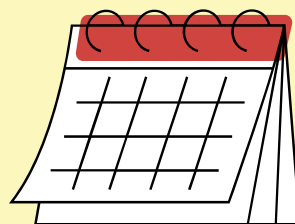
### **Terms for 2025**

Term 1: Tuesday 28 January to Friday 11 April

Term 2: Monday 28 April to Friday 27 June

Term 3: Monday 14 July to Friday 19 September

Term 4: Monday 6 October to Friday 12 December



### **Public Holidays**

Auckland Anniversary

Monday 27 January

Waitangi Day

Thursday 6 February

Good Friday

Friday 18 April

Easter Monday

Monday 21 April

Easter Tuesday

Tuesday 22 April

Anzac Day

Friday 25 April

King's Birthday

Monday 2 June

Matariki Day

Friday 20 June

Labour Day

Monday 27 October



### **Staff Only Days - Children do not come to school on these days**

- Friday 28 March
- Friday 17 October

### **Inquiry Concepts for 2025**

- Wellbeing / Hauora – Who are we? Whanau, culture
- Preservation – Endangered New Zealand species
- Movement – Dance / Drama / PE
- Challenge – Making structures

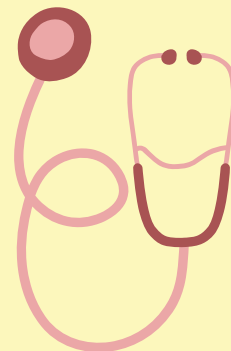


### **We will also:**

- continue to emphasise achievement in reading, writing, oral language and maths.
- maintain the focus on school values and key competencies.
- continue to provide a focus on science and the environment.

## Dental Nurse

The Dental Nurse is here from time to time.  
The dental clinic phone number is 837-6635.



## School Nurse

The school nurse is at school Monday to Friday for part of the day to support children's health. The Healthline is 0800 611 116 if you need more information.

## Car Parks

**For safety reasons parents are asked NOT to bring their cars into the school car park off Preston Road.** If you wish to drop off or pick up children, please use the Fisher Crescent entrance. There is much less traffic and this is a much safer area for the children to wait.



## **Concerns and Complaints**

1. Talk to the class teacher by note or ring the school office.
2. If you are still not satisfied then arrange a meeting with the deputy principal or principal through the office staff.

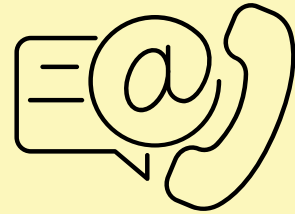
If something happens at school that you are concerned about please contact us.



## **Addresses and Phone Numbers**

If you change your address or phone number, please notify the school.

This is particularly important when we need to contact parents/caregivers in case of sickness or accident.



## **Dogs**

Dogs are not to be brought into the school grounds. This includes dogs on a leash. This is for health and safety reasons.

## **Reporting to Parents**

Written reports will be sent home at various times throughout the year.



Parent, student and teacher discussions are held each year with parents, students and the teacher. If you are in any way concerned about your child, please contact us and make an arrangement to come to school and discuss the matter with the principal and/or your child's teacher.



## **STAFF LIST**

Principal  
Acting Deputy Principal

Sarah Mirams  
Jenni von Below

Room 1  
Room 2  
Room 3  
Room 4  
Room 8  
Room 9  
Room 10

Lydia Vea  
Jenni von Below  
Lee Slater  
Rhian Fenton  
Stephanie Howard  
Taruna Naicker  
Lee Mays

Garden to Table and  
Technology Specialist Teacher

Jess Jarvie

Office Manager  
Office Administrator

Veronica Keswell  
Megan Alderton

Learning Assistants

Sandra Seymour  
Sharlene Yeo  
Amelia Tipasa  
Nga Tekeu  
Sapon Tua  
Naotia Atiana

Kitchen Specialist  
Garden Specialist

Margi Boswell  
Fiona Wilkinson

Caretaker

John Almond

## **BOARD MEMBERS**

Chairperson

Miriama Cameron

Principal

Sarah Mirams

Staff Member

Jenni von Below

Members

Siki Ah Shew

The Board meet once a month in the meeting room at 4.00 pm.

The public are welcome to attend these meetings.

A copy of the school Strategic Plan, Board Policies, Minutes and Agendas and various reports are available in the office.

